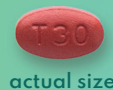


# GETTING STARTED ON XPHOZAH

A different approach that blocks, not binds, phosphorus



Dosed as  
One pill,  
twice a day.

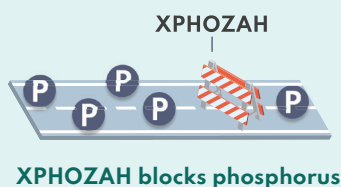


## WHY WAS I PRESCRIBED XPHOZAH?

When your kidneys aren't working well, extra phosphorus can build up in your blood. Everyone needs a certain amount of phosphorus but, over time, too much can be harmful and can lead to serious health issues. That's why your healthcare provider prescribed XPHOZAH. XPHOZAH helps lower phosphorus when you take it with your binder or on its own if you cannot tolerate a binder.

## HOW DOES XPHOZAH WORK?

XPHOZAH is a blocker and works **differently** than phosphate binders. XPHOZAH is like a roadblock, blocking some of the phosphorus from getting into your bloodstream.



## HOW DO I TAKE XPHOZAH?



**Take 1 pill** right before you eat your first food of the day



**Take 1 pill** right before you eat your last food of the day

## WHAT SHOULD I DO IF I MISS A DOSE?

If you miss a dose, skip that dose but take your next dose at the regular time.



## SHOULD I INCREASE MY DOSE IF I EAT A LOT OF PHOSPHORUS?

No, do not adjust your dose of XPHOZAH without talking to your doctor.



**FLIP TO CONTINUE  
THE CONVERSATION**

## INDICATION

XPHOZAH (tenapanor) 30 mg BID is a prescription medicine used to reduce serum phosphorus in adults with chronic kidney disease (CKD) on dialysis as add-on therapy when phosphate binders do not work well, or when phosphate binders cannot be tolerated.

## IMPORTANT SAFETY INFORMATION

**The most important information about XPHOZAH is:**

- XPHOZAH may result in softer and/or more frequent bowel movements.
- Do not give XPHOZAH to children who are less than 6 years of age

**Please see additional Important Safety Information throughout and full Prescribing Information at [XPHOZAH.com/PI](https://www.xphozah.com/PI) or in pocket.**

 **XPHOZAH**<sup>®</sup>  
(tenapanor) tablets



## WHAT ARE THE POSSIBLE SIDE EFFECTS OF XPHOZAH?

You may experience diarrhea while taking XPHOZAH. Diarrhea includes looser stools and/or more frequent bowel movements, regardless of severity.

- ◆ Diarrhea is the most common side effect and is usually mild-to-moderate; 5% of patients reported having severe diarrhea. Call your doctor if you develop severe diarrhea
- ◆ Normal bowel habits vary widely, so it is essential to discuss what you are experiencing with your doctor

Because you may experience diarrhea, looser stool, and/or more frequent bowel movements with XPHOZAH:

- ◆ Stop use of stool softeners or laxatives
- ◆ Do not take right before a hemodialysis session, as you may experience diarrhea after taking XPHOZAH. Instead, take before your next meal after dialysis
- ◆ During the clinical trials of XPHOZAH, participants were allowed to use anti-diarrheal medications like loperamide to manage diarrhea. Ask your doctor about the use of anti-diarrheal medications

## WHAT DO I NEED TO DO TO GET XPHOZAH?

Your doctor will send your XPHOZAH prescription to a specialty pharmacy—the pharmacy will reach out at every refill via text or phone.



**You must respond to any text or calls to get your prescription.**  
The specialty pharmacy will work with you to arrange delivery of your XPHOZAH.



**What if I have questions or need help with access and/or affordability?**  
ArdelyxAssist is here to help. Please contact us at **1-877-527-3927, Option 3**

## IMPORTANT SAFETY INFORMATION (cont'd)

### Do not use XPHOZAH in:

- Children who are less than 6 years of age
- Patients who have a suspected bowel blockage

### Before taking XPHOZAH, tell your healthcare provider about all of your medical conditions, including if you:

- are pregnant or plan to become pregnant
- are breastfeeding or plan to breastfeed

Do not use XPHOZAH with stool softeners or laxatives. **Tell your doctor about all the medicines you take,** including prescription and over-the-counter medicines, vitamins, and herbal supplements.

### XPHOZAH can cause serious side effects, including:

Diarrhea is the most common side effect of XPHOZAH, and it can sometimes be severe. Call your doctor if you develop severe diarrhea.

These are not all the possible side effects of XPHOZAH. Call your doctor for medical advice about side effects. You may report side effects to FDA at 1-800-FDA-1088. You may also report side effects to [www.fda.gov/medwatch](http://www.fda.gov/medwatch).

**Please see additional Important Safety Information throughout and full Prescribing Information at [XPHOZAH.com/PI](http://XPHOZAH.com/PI) or in pocket.**



© Ardelyx, Inc. 2025. All rights reserved. Ardelyx and XPHOZAH are registered trademarks of Ardelyx, Inc. and ArdelyxAssist is a trademark of Ardelyx, Inc. US-XPH-0196v2 12/25

 **XPHOZAH<sup>®</sup>**  
(tenapanor) tablets